

AGRIDEMO F2F

Building an interactive AgriDemo-Hub Community

AgriDemo-F2F has received funding from the European Union's Horizon 2020 research and innovation programme under grant agreement No 728061.



AGRIDEMO



MEET THE AGRIDEMO-F2F TEAM

AGES



AGES is a government owned agency and research organisation attached to the Federal Ministry for Health and to the Federal Ministry of

Agriculture, Forestry, Environment and Water Management. Key responsibilities of AGES are agriculture, food security and food safety, food quality, nutrition, animal health and public health.

● [Read more.](#)



ΤΕΧΝΟΛΟΓΙΟ ΠΑΝΕΠΙΣΤΗΜΙΟ ΑΘΗΝΩΝ
AGRICULTURAL UNIVERSITY OF ATHENS

AUA

The Agricultural University of Athens (AUA) is the third oldest university in Greece. The Department of Agricultural

Economics and Rural Development set up as its primary aim to promote knowledge and to educate scientists specialized in research and in tackling problems connected with sustainable rural development.

● [Read more.](#)



AGRICULTURES
& TERRITOIRES
CHAMBRES D'AGRICULTURE
ARC ATLANTIQUE

AC3A

AC3A is an association, its members are the Chambers of Agriculture from the Atlantic Area in France. They

work regularly with the AC3A staff to develop ideas for projects, pass on important needs, and highlight interesting activities.

● [Read more.](#)

NEWS

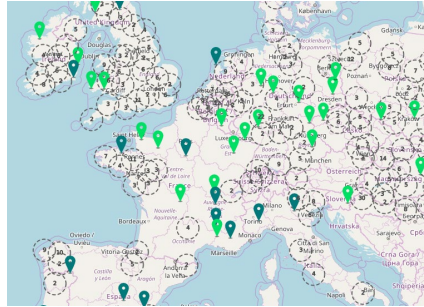


AgriDemo-F2F presents collaboration at 2 cross fertilisation events

On the 8 of March, the cross-fertilisation event for multi-actor project coordinators took place in Brussels.

The meeting aimed at contributing to the implementation of multi-actor projects of the H2020 Work Programme, a new participatory approach which started from the first H2020 call 2014.

● [Read More](#)



Mapping on-farm demonstration through the FarmDemo inventory

AgriDemo-F2F and PLAID have developed a European-wide, geo-referenced inventory, to provide a global view of on-farm demonstration activities and knowledge exchange modalities between farmers.

The inventory covers the EU member states, plus Switzerland, Norway and Serbia. Data collected reveal a wide range of this type of activities, that will be properly assessed during the next phase of the project.

● [Read More](#)



FarmDemo supra-regional meeting of Northern countries in Leuven

Following the lead of the previous supra-regional meetings for Southern and Eastern countries, the FarmDemo Supra-regional Meeting for Northern countries took place on 28th March 2018.

Objective was to address results of the inventory in the context of those countries, and analyse and compare specificities of the on-farm demonstration activities in the Northern and Central European countries.

● [Read More](#)

HAVE YOU MISSED THIS?



James Hutton Inst
@JamesHuttonInst

We agree with you @PhilHoganEU "The future is research and innovation!", and the importance of peer-to-peer in farming referring to @PLAID_Project & our collaborators in @AgriDemoF2F #AgriResearchEU



AgriDemoF2F
@AgriDemoF2F

AgriDemo is been discussed at this event organised by our colleague @peterparee. One week after, still finding pics reflecting how much in common we have with the @EIPAGRI_SP #thematicNetworks and #AKIS



Dr Hannah M Chiswell
@RuralResearcher

Another great #FarmDemo event this evening *huge* thanks to participants who completed our @AgriDemoF2F surveys! Loads of peer-to-peer learning and open discussion.



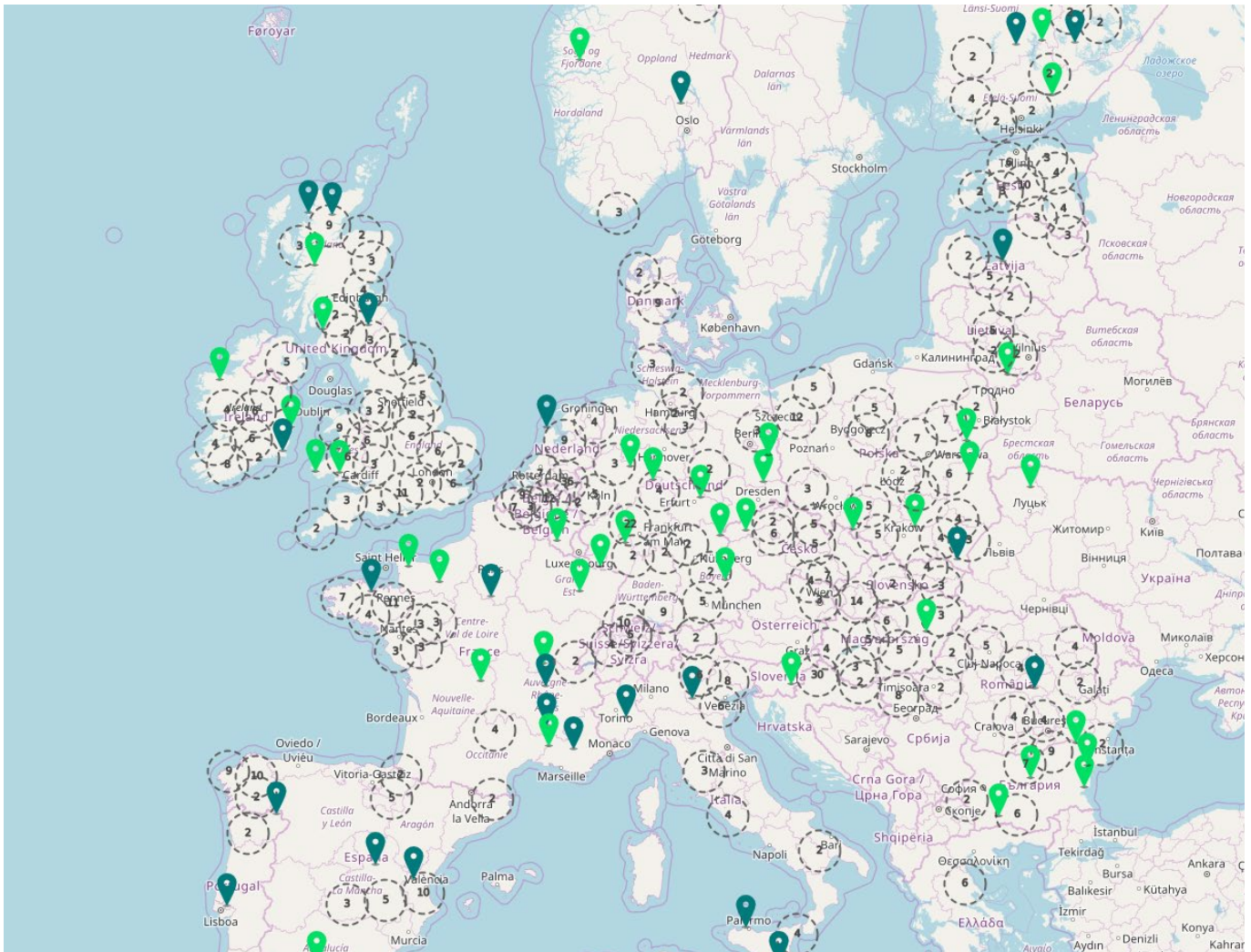
Centrum Doradztwa Rolniczego Radom

Joint visit of RemixIntercrops and AgriDemo F2F project at a demonstration farm in Grabów n. Wisła. Participants count the emergence of mixtures with peas sown in the field trials.



European Landowners' Organization

Representatives from AgriDemo F2F and PLAID_project are meeting today in Krakow today to discuss the progress with each project and where synergies can be found between them. Alföldi (@tombas60)



Profiling on-farm demonstrations across EU: Results from the FarmDemo inventory

AgriDemo-F2F and PLAID have been jointly developing an inventory of farms and organisations involved in on-farm demonstration activities. Around one thousand farmers and organisations contributed to the survey, helping to characterise farms and participating actors, but also conditions and means enabling demonstration activities. Despite the fact that data are still under analysis and that we did not aim for a representative sample, inventory results show some interesting trends.

The focus of the inventory was on so-called ‘commercial farms’, i.e. actual working farms. They represent 65% of the farms in the inventory. The rest are of research or experimental purposes, public or charitable farms (e.g. from NGOs).

Concerning the motivation for demonstration, the most repeated answer has been to gather/share information (20%), followed by knowledge creation, educational or training opportunities and for enhancing competitiveness or productivity (10% each).

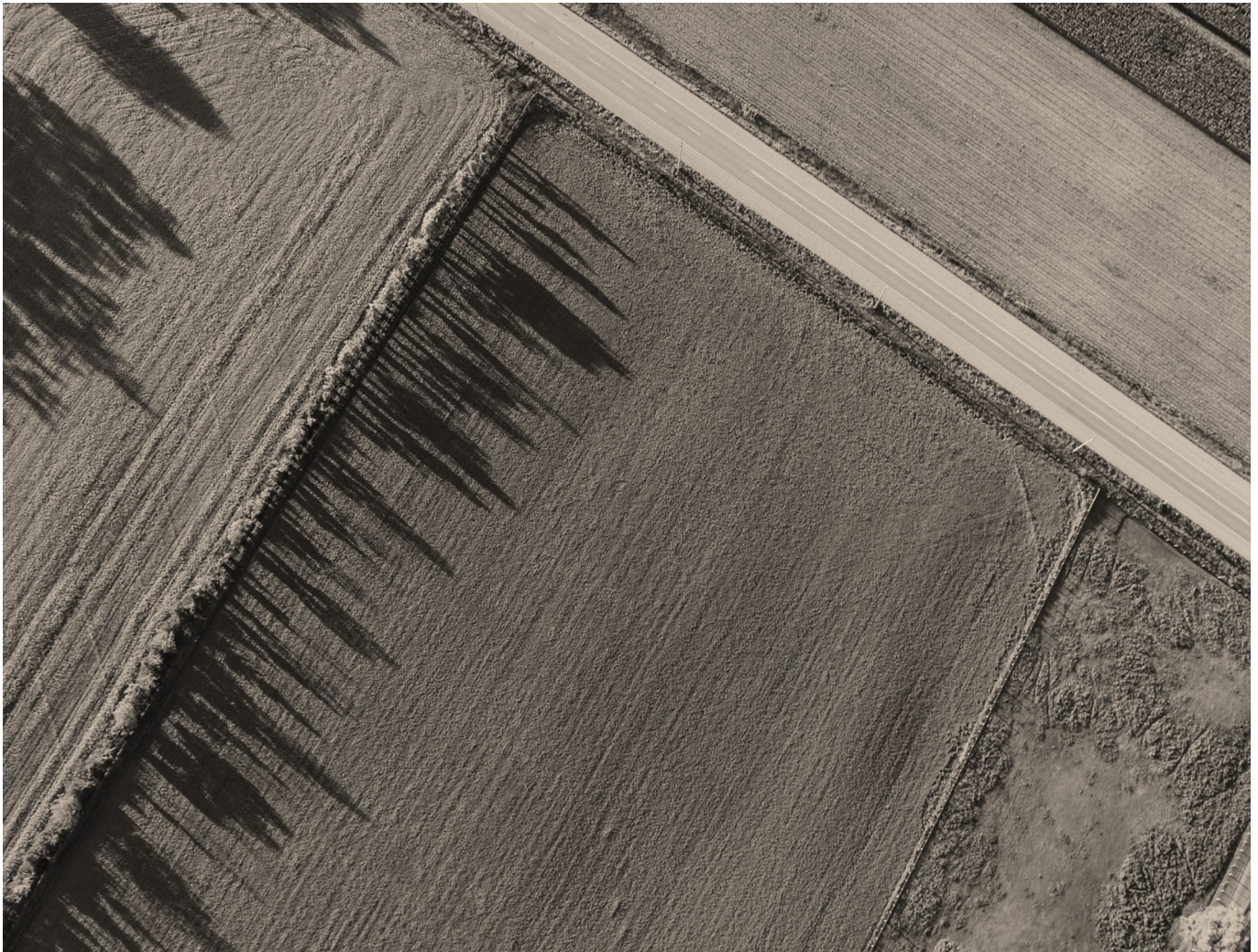
When focusing on the people and means, normally the farmer is the

main demonstrator (52%), followed by advisers and researchers or students (20% each). 36% of the demos are self-funded by the farmer or organisation, followed by approx. 20% covered by public money (regional, national, EU) and 10% financed by advisory and extension services.

And what about topics addressed on the demonstrations? The inventory reveals that the majority of demonstrations focus on crops, more in particular on arable crops (combinable and root), fodder crops and vegetables (75% of all crop demonstrations). Dairy, beef cattle and sheep husbandry cover 75% of the livestock demos.

Are you curious about data from your nearby area? Explore the geo-referenced map of the inventory or check the main facts and figures in the country report posters.

- Geo-referenced map of the inventory (<https://farmdemo.eu/>)
- Country report posters (<https://agridemo-h2020.eu/farm-inventory-country-report-posters/>)



Building up an interactive community with FarmDemo Hub

The FarmDemo Hub (<https://farmdemo.eu/hub/>) is a platform with resources and tools supporting on-farm demonstrations across Europe.

It works as a meeting place for farmers carrying out on-farm demonstrations and the potential participants of those activities. At a first view, the homepage counts on a gallery with direct access to some farms, plus a georeferenced map where these demonstration farms and organisations (programming on-farm demo events) are displayed.

By freely exploring the map, the user can find demonstration farms across Europe. Additionally, for a more accurate search there exist filters to refine the query by e.g. country, demo topic, type of farm or language.

Furthermore, for farmers hosting demonstrations, registration at the platform will provide them with an activity panel where information about the farm and the demonstrations carried out there (topics,

dates, description of activities, etc.) can be added. Depending on the level of privacy chosen, the information will be displayed on the georeferenced map and searchable by the rest of users. This offers the demo-farmers the opportunity to disseminate their activities more widely, which is especially welcome in case of very specific topics.

On the other hand, for those interested in attending demonstrations (e.g. other farmers or advisers), the platform allows the creation of a personal profile so as to interact with the demo farmers, for example indicating interest, subscribe to a specific demonstration or asking for further information.



Geographical approach to on-farm demonstration activities

The agricultural sector, farming systems and farmers themselves are extremely diverse in Europe and so are the on-farm demonstrations. By understanding this diversity, we might be able to find out enabling mechanisms and driving forces for demonstration activities for different farm environments and performances.

As a first approach, this has been carried out by AgriDemo-F2F, together with PLAID, through a country-wide analysis of the data from about 700 farms and 400 organisations inventoried in 2017. Results are now available in poster format and show certain tendencies and distinguishing characteristics, revealing some key aspects playing a role in the development of on-farm demonstrations. Results were discussed during 3 supra-regional meetings across Europe.

First the support or involvement of the public administration, advisory services and/or networks explains some of the biggest geographical differences. For example, in Germany or France, these organisations are the main drivers of this kind of activities, promoting, coordinating, but also

providing funding for the farmers actively engaging at demonstrations.

When that's not the case and the environment of the farmer is less structured or supportive, research activities might act as main promoters of the on-demonstration activities, and Portugal or Greece are excellent examples of it. Here most of these events are connected to scientific projects, and very few are lead for and by farmers.

Then, concerning aim and topics of the demonstrations, although profitability or productivity keep being top objectives, currently there is an increasing preference for topics specially connected with societal demands (e.g. environmental aspects) as in the case of Sweden.

Finally, there are some aspects not related to a specific country. For example the gender imbalance is a common issue across Europe and in some sectors, e.g. in organic farming, it is more common to learn from peers than others.

For further information check the country posters (<https://agridemo-h2020.eu/farm-inventory-country-report-posters/>)